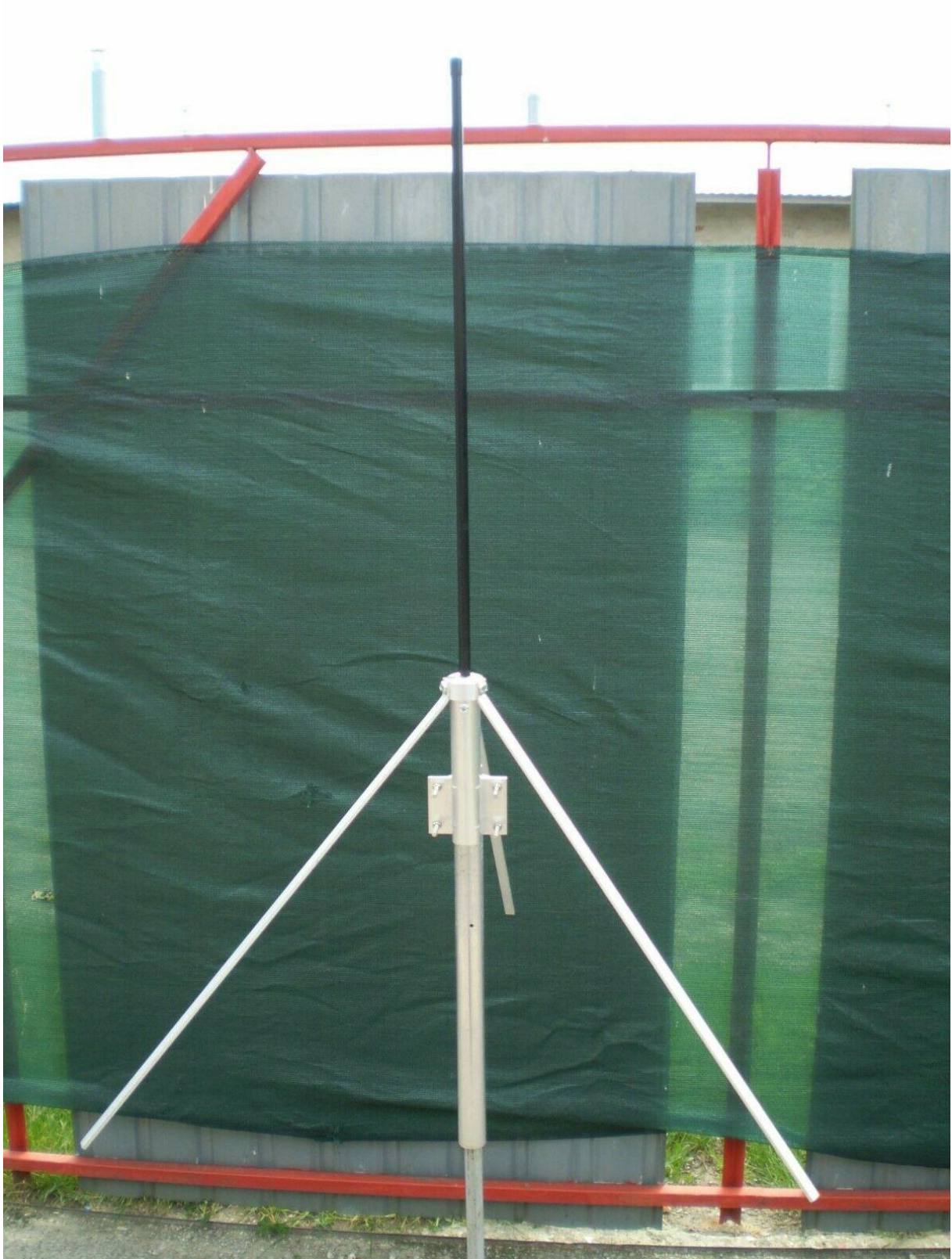


VINNANT-ANTENA FOR AIRBAND OPERATIONS  
TUNABLE 1/4, TYPE OF118-136-P N CONNECTOR



**TYPE : TYPE OF118-136-P**

To be used for:

**AIRPORT VOICE OPERATIONS**

**ACARS RECEPTION**

antenna is designed for RX and TX as well

**Technical parameters:**

Lenght 70cm antenna,84 cm with holder

Width 22cm

Gain 2.15dBi

Weight 0,5kg

pole diameter up to 55mm,min 25mm

connector N female UNLESS SPECS OTHERWISE

power handling 100W

swr 1.2:1 or better CENTER FREQUENCY

IMPEDANCE 50OHM

BANDWIDTH AT SWR 1,5 6MHZ/+ - 3MHZ OFF CENTRE/

radiation pattern H plane 360 degrees

radiation pattern E plane 100 degrees

radome material:BLACK FIBERGLASS RADOME

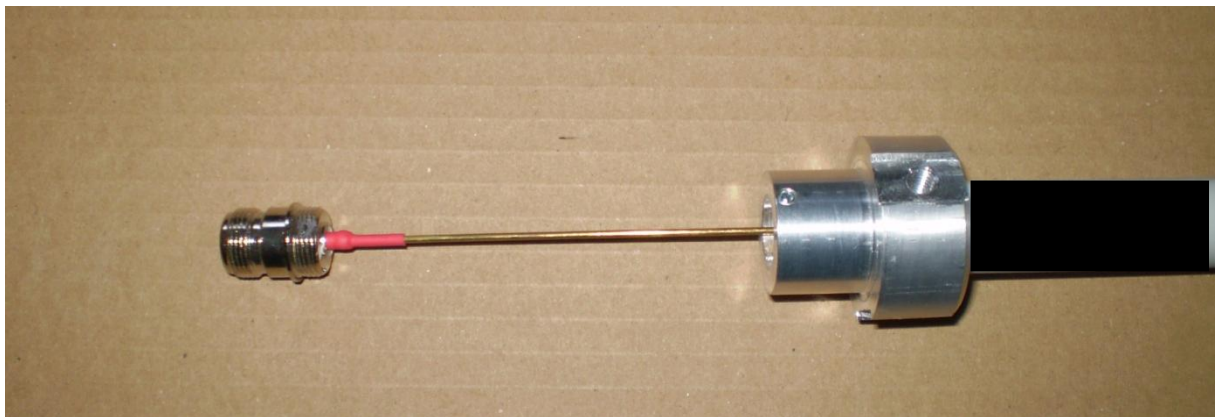
**TUNING PROCEDURE OF THE ANTENNA:**

ANTENNA IS TUNABLE IN RANGE 118-136MHZ BY CUTTING THE INNER ELEMENT WIRE ACCORDING TO THE CUTTING CHART.THE SHORTENNING OF THE ELEMENT OF THE ANTENNA IS APPROXIMATE,HOWEVER FOR REGULAR AND MOST APPLICATION IT IS FULLY ACCEPTABLE,SINCE THE ANTENNA SHOW RATHER WIDE BANDWIDTH.NO SWR METER IS REQUIRED FOR THIS OPERATION.

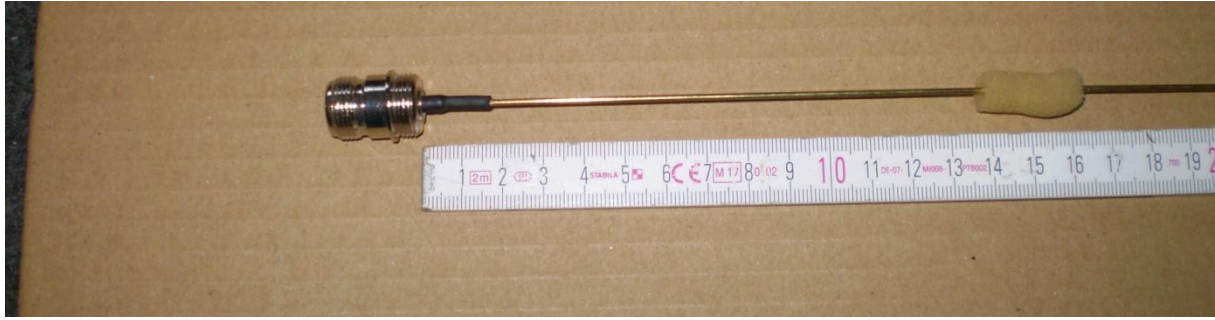
USE ENCLOSED ALLEN KEY TO ACCESS THE ANTENNA INTERNAL ELEMENT



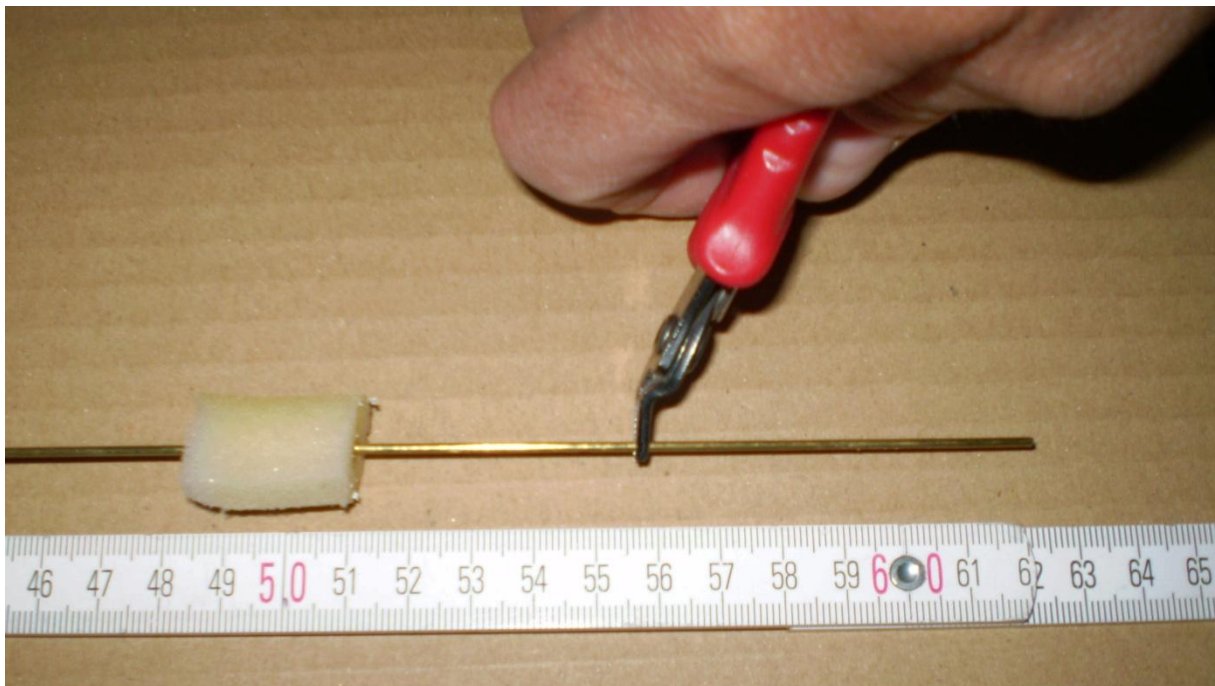
PULL THE INTERNAL STRUCTURE FROM THE ANTENNA



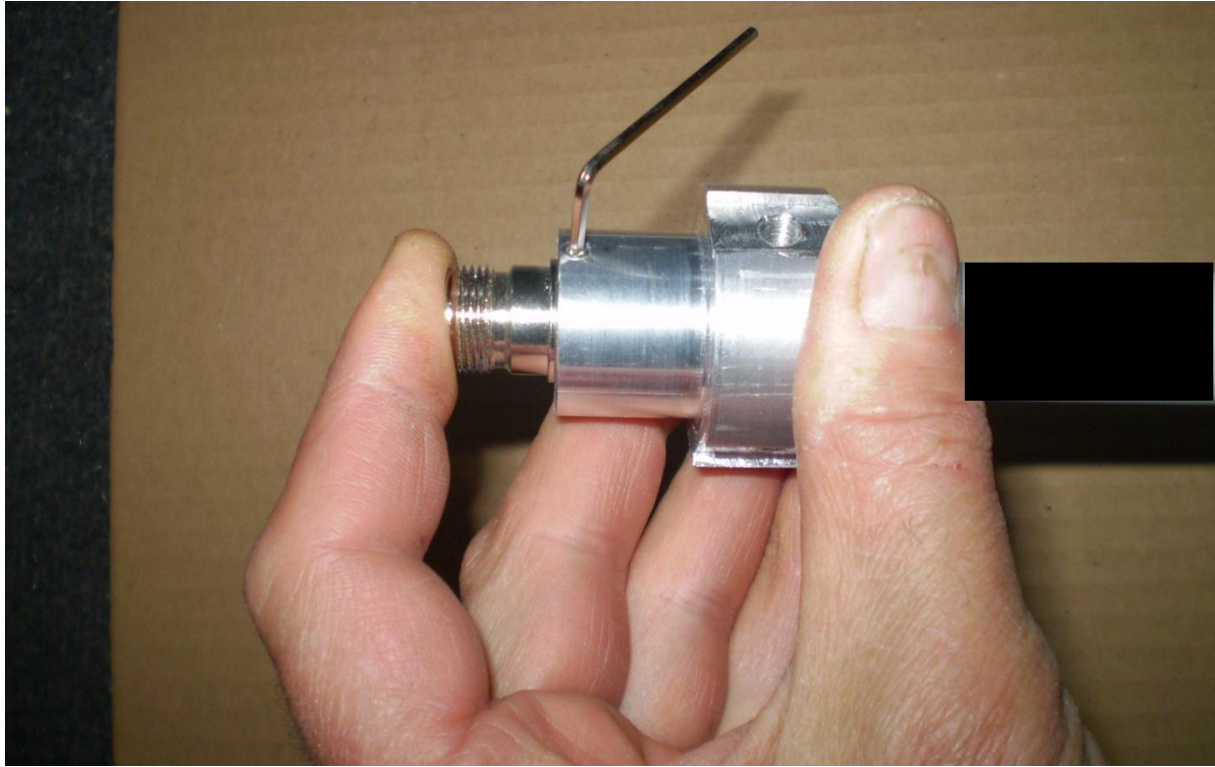
MEASURE WITH THE APPROPRIATE TOOL THE ELEMENT LENGTH AND CUT ACCORDING THE CUTTING CHART,POSITION THE METER AT THE POINT WHERE THE CONNECTOR ENDS AND ELEMENT BEGIN,USE PERMANENT MARKER TO MAKE THE DOT ON THE ELEMENT



MEASURE THE LENGTH AT THE END OF THE ELEMENT, RIGHT NEXT TO THE END OF THE CONNECTOR, FIND AND MARK YOUR FREQUENCY ACCORDING THE CHART AND CUT THE EXCESS LENGTH WHILE THE METERS IS TOUCHING THE CONNECTOR IN DESCRIBED WAY STEP BEFORE



ONCE DONE, GUIDE THE ELEMENT INSIDE OF THE RADOME, HOLD ELEMENT WIRE SHORT TO THE OPENING NOT TO BEND THE STRUCTURE, LEAD SUPPORTING SPONGES ONE BY ONE. WITH ALL ELEMENT INSIDE, ALIGN THE CONNECTOR NUDGE WITH THE HEADLESS SCREW AND TIGHT STRONG. USE THE FINGER TO PRESSURE THE CONNECTOR INSIDE WHILE TIGHTENING THE SCREW



TUNING CHART:

118MHZ 60,5CM 120MHZ 60CM 122MHZ 59CM 123MHZ 58CM 124MHZ 57,5CM

126MHZ 57CM 129MHZ 56CM 130MHZ 55CM 132MHZ 54CM 134MHZ 53CM

135MHZ 52M 137MHZ 51CM

## MOUNTING OF THE ANTENNA

AFTER THE TUNING,ANTENNA IS READY FOR USAGE.FIRSTS PLACE THE HOLDER ON VERY END OF THE POLE AS ON THE PICTURE,MAKE SURE THE POLE/MAST DOES NOT PROTRUDE GREATLY BEYOND METAL PLATE OF THE ANTENNA HOLDER.OTHERWISE POLE WOULD INTERFEERE WITH RADIALS AND ANTENNA WOULD BE DIFFICULT TO MOUNT.



MOUNT THE RADIALS ONTO THE ANTENNA. PLEASE USE THE SPRING WASHERS IF PRESENT IN ORDER SCREW-WASHER-RADIAL. TIGHT STRONG TO AVOID LOOSENING IN THE WIND.

LEAD THE CABLE THROUGH THE ANTENNA HOLDER AND CONNECT TO THE ANTENNA. DO NOT SEAL CONNECTOR IN ANY WAY, THE HOLDER PROVIDES SUFFICIENT WEATHER PROTECTION.

HAND TIGHTENING OF THE CONNECTOR IS GOOD ENOUGH, DO NOT USE TOOL/PLYERS/.

FIND AND ALIGN THE SCREW HOLE WITH HOLDER HOLE, APPLY AND TIGHT STRONG.