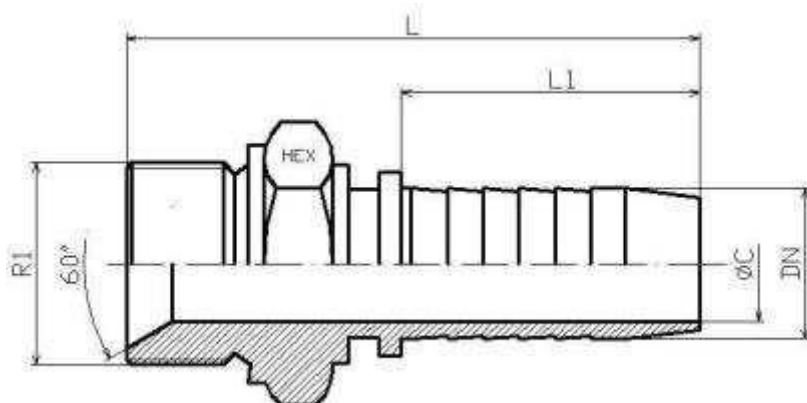


ZÁVITOVÁ KONCOVKA PEVNÁ, BSP VONKAJŠÍ ZÁVIT KUŽELOVÝ 60°



Materiál: uhlíková oceľ alebo nerez

DN	R1	L	L1	HEX 1	ØC
3/16"	1/8" BSP	42	24	14	3
1/4"	1/8" BSP	48,5	20,5	14	4
1/8"	1/4" BSP	45,5	22	17	2
3/16"	1/4" BSP	47,5	23,5	17	3
1/4"	1/4" BSP	52	24	19	4
3/8"	1/4" BSP	54	29,5	17	7
1/4"	3/8" BSP	55	27	22	4
5/16"	3/8" BSP	55	27	22	5,5
3/8"	3/8" BSP	57,5	28	22	7
1/2"	3/8" BSP	58	30,5	22	9,5
1/4"	1/2" BSP	61,5	28	27	4
3/8"	1/2" BSP	61	31,5	27	7
1/2"	1/2" BSP	61,5	32	27	9,5
1/2"	5/8" BSP	62,5	30,5	30	9,5
5/8"	5/8" BSP	67,8	33,8	30	12
1/2"	3/4" BSP	63	30,5	32	9,5
5/8"	3/4" BSP	68,8	34,8	32	12
3/4"	3/4" BSP	75	36	32	15
3/4"	1" BSP	79,5	40,5	41	15
1"	1" BSP	88	41	41	19
1"	1"1/4 BSP	91	44	50	19
1"1/4	1"1/4 BSP	100	45,5	50	26
1"1/2	1"1/2 BSP	106	48	55	32
2"	2" BSP	124,5	52,5	65	44